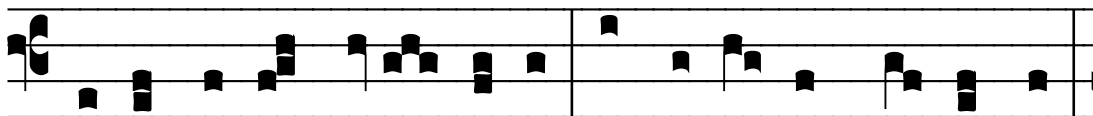


Ant. **Crucem sanctam subiit**

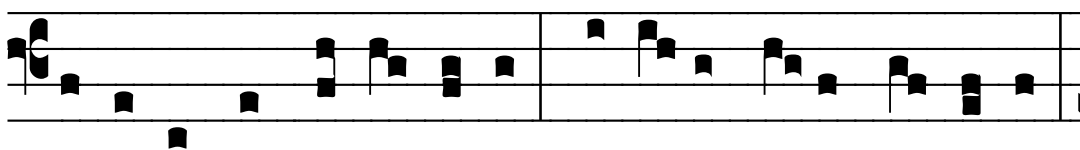
Na podstawie wykonania Ensemble Organum

(źródło: MSS poł. XII w., znaleziony w Bazylice Grobu Świętego w Jerozolimie)

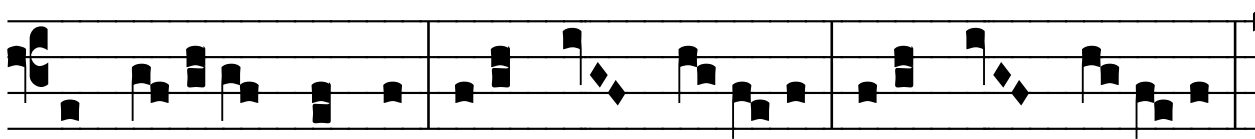
(6:40-8:19)



Crucem sanctam sub- i- it, qui infernum con- fre- git.



Accinctus est po-ten- ti- a, Sur-rexit di- e ter- ti- a.



Al- le- lu- ia.

